



LE RHÖNE
SWISS WATCHES

CATALOG
2020 - 2021



4 | LE RHÖNE
Human Tempö

5 | HORÖLOGY
Unique & Exceptional

7 | RÖAD RACER
High Precision

9 | HEDÖNIA
Elegance & Refinement

11 | MOÖN_41MM
Grande Phase de Lune

13 | MOÖN_37MM
Ode to femininity

15 | HIGH JEWELRY
Hedönia and Moön Limited Editions

17 | VÖYAGE
Jumping Meridian Time

19 | OFFICIAL WATCHMAKER
AS Monaco Football Club

21 | CUFFLINKS
Hypnotic Movement

23 | CUSTOMIZATION
Fulfill your dreams

24 | TRACEABILITY & WARRANTY
Authenticity & Transparency

*The highest quality standards with
a touch of modernity & audacity*



*We are delighted to present you
our universe & collection,
a result of passion and dedication.*

Zoë & Tino

LE RHÖNE

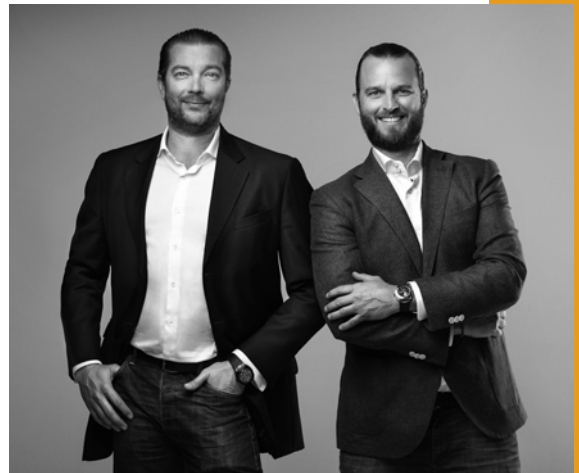
Human Tempö

The success of Le Rhône is driven by a true passion for excellence and the entrepreneurial spirit of its founders Loïc Florentin & Timo Rajakoski.

After embarking on their careers for luxury groups, the two childhood friends founded Le Rhône in 2013.

Each timepiece is first and foremost the product of talented craftsmen based in the best Swiss workshops and working with the utmost respect of watchmaking tradition.

Combined with the founders' original approach to watchmaking, it creates the essence of Le Rhône watches.





Technical Features

Movement: Hand-winding, fully developed & manufactured in Switzerland - 385/395/454 components (depending on the version) - 21600A/h - Power Reserve: approx. 72h. Functions: Hours, Minutes, "Jumping" display of 24 hour second time zone - Double Flying Tourbillon. Case: diameter 45 mm - Sapphire case back. Water-resistance: 100 meters / 330 feet.



R4PG012U1-A80D

HORÖLOGY

Unique & Exceptional

These Haute Horlogerie timepieces, crafted by the most talented Swiss artisans, reveal the beauty of their mechanism. Three calibers have been developed for the exceptional and bold Horölogy line, all adorned with our iconic propeller: a Double Flying Tourbillon JMT (Jumping Meridian Time), a Double Flying Tourbillon Home Time and a Double Bridge Tourbillon Home Time.

Each Horölogy timepiece is unique. Contributing with passion to your ultimate dream, Le Rhône gives you the possibility to personalize your watch by choosing materials, colors and other elements.

To discover other unique designs please visit our website.

DOUBLE FLYING
TOURBILLON JMT



R4DD301U1-A99D

DOUBLE FLYING
TOURBILLON HOME TIME



R3TT094U1-A99D

DOUBLE BRIDGE
TOURBILLON HOME TIME



R2WG091U1-A99D



RISS013-1-A99D



RISS351-1-A99D

Technical Features

Movement: Automatic, fully developed & manufactured in Switzerland - 28000A/h - Power Reserve: approx. 42h. Functions: Hours, Minutes, Small Seconds, Date - Chronograph with 60-minute counter, central second - Tachymeter. - Case: diameter 45 mm - Sapphire case back. Water-resistance: 100 meters / 330 feet.

RÖAD RACER

High Precision

Röad Racer is the very first collection of Le Rhône's timepieces. Those powerful watches, offering high-end chronographs, have been thought through every detail: the dial refers subtly to the dashboard counters of vintage American cars.

The two counters – located at 9 and 3 o'clock – respectively displaying seconds and the bicompass chronograph, capture the sporty character of the watch. The Röad Racer timepieces provide a high precision of time measurement, expressing the savoir-faire of our talented craftsmen.



RIDP099-1-A99D



R1DD097-1-A99D



R1PG099-1-A80D



R1DD090-1-A90D



R1SS096-1-A99D

Technical Features

Movement: Automatic, fully developed & manufactured in Switzerland - 128 components - 28000A/h - Power Reserve: approx. 42h. Functions: Hours, Minutes, Seconds. Case: diameter 41 mm - Sapphire case back - Interchangeability strap system. Water-resistance: 100 meters / 330 feet.



HEDÖNIA

Elegance & Refinement

The Hedönia collection is a compromise between technics and aesthetics. Keeping the signature case of Le Rhône, the Hedönia line embodies elegance and refinement.

The Hedönia with hour, minute and second hands has a Côte de Genève certified dial with a vertical guillochage done to perfection by Swiss craftsmen.

The 41 mm model exemplifies the perfect classic yet casual chic timepiece to be worn on a daily basis. Playing on the ambivalence of the design, both men and women can easily adorn their wrist with an Hedönia timepiece.



H1SS012-1-C91D



H1SS012-1-S00D



H1SS091-1-C91D



H1SS091-1-S00D



Technical Features

Movement: Automatic, fully developed & manufactured in Switzerland
Moonphase correction by the crown - 147 components - 28000A/h Power Reserve: approx. 42h - Functions: Hours, Minutes - Central Moonphase display. Case: diameter 41 mm - Sapphire case back- Interchangeability strap system. Water-resistance: 100 meters / 330 feet.



MOÖN 41 mm

Grande Phase de Lune

An exclusive in-house Grande Phase de Lune complication comes to light with the contrasts of the blue or black cosmic dial rotating on the top of the moon. This disk is crafted of a mother-of-pearl or silver texturized and surrounded by a SuperLuminova star studded sky.

*Other versions of Moön are available on our website.

H3PG251 - 1



P00D A51D

AVENTURINE



H3PG151-1



P00D A51D



H3SS151-1



S00D A00D

BLACK COSMIC



H3PG091-1



P00D A99D

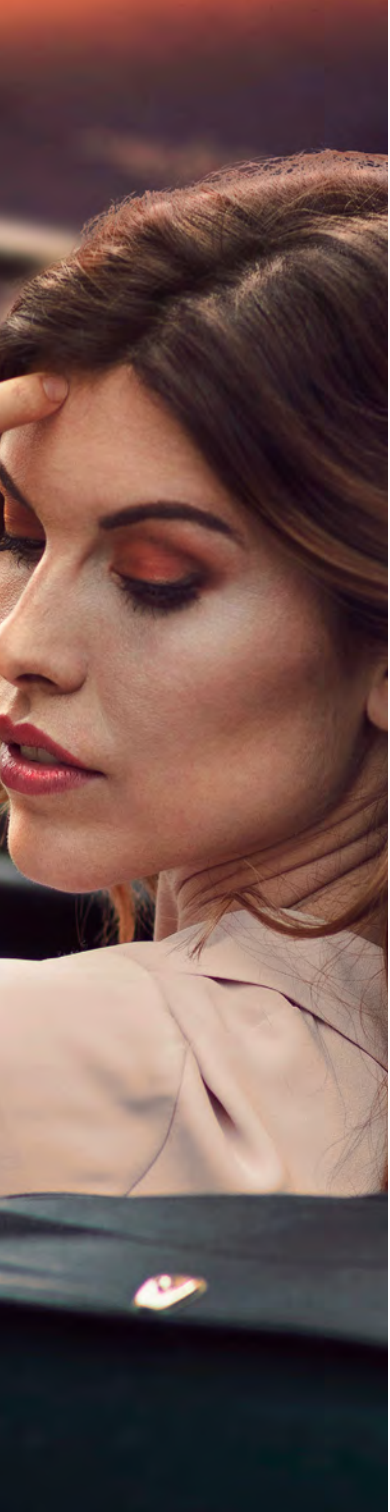


H3SS091-1



S00D A99D





MOÖN ^{37 mm}

Ode to femininity

Our Grande Phase de Lune complication in a 37 mm diameter is a smaller version of the Moön collection. The model is available in pink gold adorned with 60 diamonds or with a diamond snowflake setting bezel.



H5PG251-1-A51A



H5PG151-1-A51A

Technical Features

Movement: Automatic, fully developed & manufactured in Switzerland
Moonphase correction by the crown - 147 components - 28000A/h
Power Reserve: approx. 42h. Functions: Hours, Minutes - Central Moonphase display. Case: diameter 37 mm - Sapphire case back. Water-resistance: 100 meters / 330 feet.



41 MM

H1PG1J1-1-P00D



37 MM

H5PG3J1-1-A00A

HEDÖNIA

Elegance & Refinement

The Hedönia automatic watch with a 41 mm case comes in pink gold fully paved with a snowflake setting bezel, mounted on a delicate gold or pearly white leather bracelet.

Showing a great delicacy, the smaller version in a 37 mm diameter is adorned of pink gold fully paved with a snowflake setting bezel or baguette-cut diamonds, mounted on a pearly white leather bracelet.

MOÖN LIMITED EDITIONS

A serie of five acts

Act-One and Act-Two are the two first acts in a play of five high jewelry pieces including variations representing a starry night, dawn, dusk, dark sky and aurora borealis. The large moon phase display, at the heart of all five of these 37 mm poetic pieces, will be respectively adorned with amethyst, garnet, tsavorite or citrine.

ACT-ONE



H5PG3J2L1-A51A

ACT-TWO

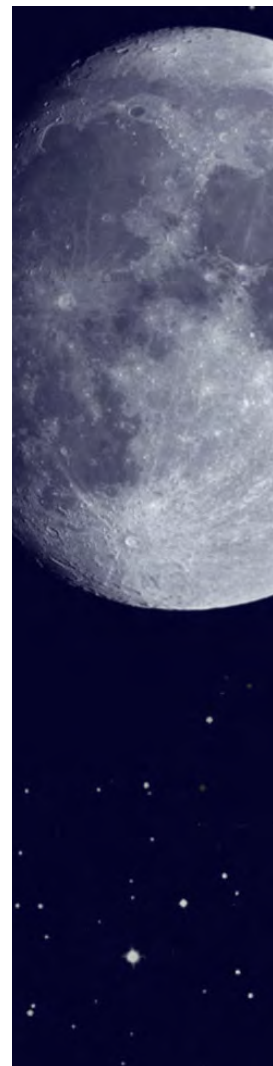


H5DD3J3L1-A61A

 SIAR

Winner of the People's
Award 2019

NOVELTY
2020





Technical Features

Movement: Automatic, fully developed & manufactured in Switzerland
- Unidirectional correction of the hour hand by pusher at 10 o'clock -
246 components - 28000A/h - Power Reserve: approx. 40h. Functions:
Hours, Minutes, Central seconds, Date at 6 o'clock - 24-hour display
of second time zone on two «jumping» discs positioned at 12 o'clock.
Case: diameter 41 mm - Sapphire case back- Interchangeability strap
system. Water-resistance: 100 meters / 330 feet.

VÖYAGE

Jumping Meridian Time

The Vöyage Jumping Meridian Time collection is perfectly suited for contemporary businessmen and travellers. Thanks to an outstanding JMT module, the timepiece makes it extremely easy to read both local and Home Time.

The Home Time is displayed on a 24-hour 'Jumping' double disc with retrograde function. The local hour can be set immediately with a simple push-piece at 10 o'clock. In echo to the inside mechanism comes a rhodium-coated atlas on a satinfinished anthracite or turquoise dial, delicately adorned with meridian lines.



H6PG052-1-A99D



H6PG052-1-P00D



H6PG092-1-A99D



H6PG092-1-P00D



Technical Features

RÖAD RACER : In stainless Steel with DLC coating
Chronograph 60 minutes, with a 45' graphic counter.



OFFICIAL WATCHMAKER

AS Monaco Football Club

On July 18, 2018, Le Rhône became the official watchmaker of the Monaco Football team, which it will remain for two seasons, 2018-2019 and 2019-2020. AS Monaco and Le Rhône share a number of common values : quality mindset, endless pursuit of precision, quest to excel, vision of the future and exclusivity.

Unique forever



Technical Features

Dimensions : 20 x 19 x 8 mm - Specifications : «German» clipping mechanism, to be triggered from cufflink's opposite side Embedded rotative propeller

CUFFLINKS

Hypnotic Movement

Le Rhône created the exquisite cufflink collection, an original collaboration with Freddy Tschumi TF Est. 1968. Five versions of cufflinks, revealing the hypnotic movement of the propeller, are presented in stainless steel, stainless steel with black DLC coating or pink gold plating.



CL - 001



CL - 002



CL - 003



CL - 004



CL - 005

CUSTOMIZATION

Fulfill your dreams

At Le Rhône, we believe in the power of creativity and therefore give our customers the freedom to create their own timepiece. Our best Swiss artisans are devoted to make your dream come true: engraving, enamel painting, choice of material, colors - everything is possible.

Clients from all around the world already customized their own watch.

Feel free to contact us for any special request.



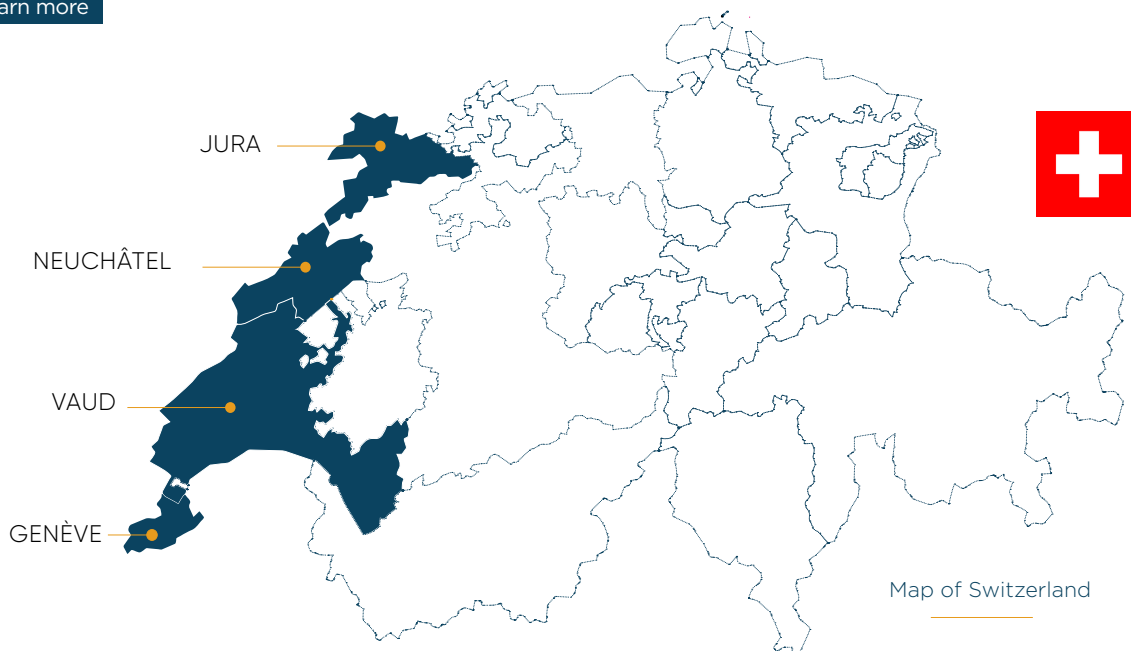
TRACEABILITY

Authenticity & Transparency

Le Rhône offers its customers a full traceability for each product. Cultivating a passion for watchmaking tradition and excellence, all Le Rhône timepieces are manufactured in Switzerland by the best craftsmen. Our artisans are settled from Geneva to all Swiss watchmaking valleys

Committed to transparency, Le Rhône works in close collaboration with its partner Product DNA and the affiliate Respect Code which certifies a detailed traceability of its timepieces.

[Learn more](#)



WARRANTY

Confident towards the quality we offer, we provide a 10-year warranty.

International warranty of 2 years from the date of purchase and 8 more years by registering online.

*An endless pursuit
of excellence and precision*





Route du Nant-d'Avril 96 - 1217 Meyrin / Switzerland
contact@lerhone.com - www.lerhone.com
Tel. +41 22 753 88 88



#HUMANTEMPÖ